

GOLFLENGTE SCHAKELLAAR 6 STANDEN: KG I, KG II, MG, LG, FM, GRAM.
 GETEKEND IN STAND KG I
 SPANNINGEN GEMETEN MET VOLTMETER 10 000 Ω/V
 SPANNINGEN EN STROMEN ZONDER ANTENNESIGNAAL

UITSLUITEND VOOR APP. 4321 TOT 6191.

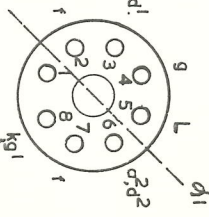
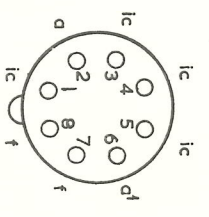
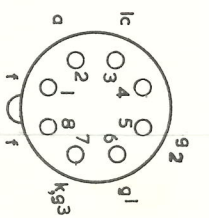
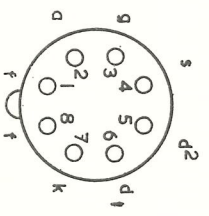
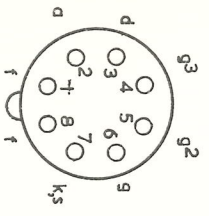
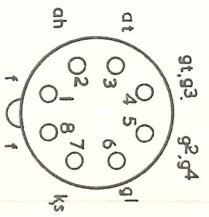
ECH 42

EAF 42

EBC 41

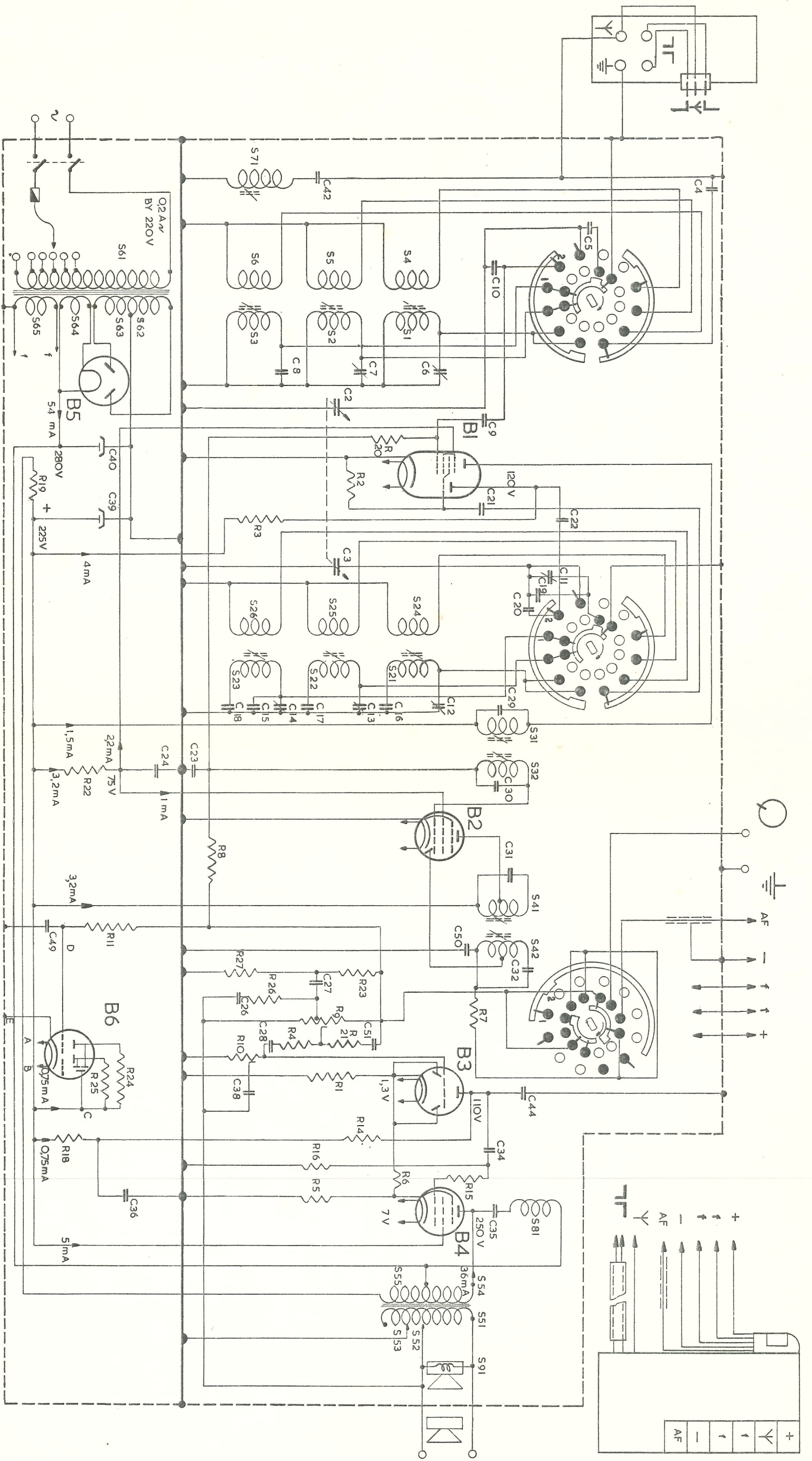
EL 41

AZ 41



C	42, 4, 5, 10,	6, 7, 8, 2, 9, 40,	39, 19, 21, 22, 3, 11, 19, 20,	12, 16, 13, 17, 14, 15, 18,	29, 30, 23, 24, 31, 49, 50,	32,	27, 26, 28, 51, 44, 36,	34, 35, 36,
S	71,	4, 5, 6, 61, 62, 63, 64, 65,	1, 2, 3,	24, 25, 26,	21, 22, 23,	31,	32,	81
R		20,	2, 19,	3,	22,	8,	11,	23, 27, 26, 7, 9, 21, 4, 10, 1, 24, 25, 14, 15, 16, 18,

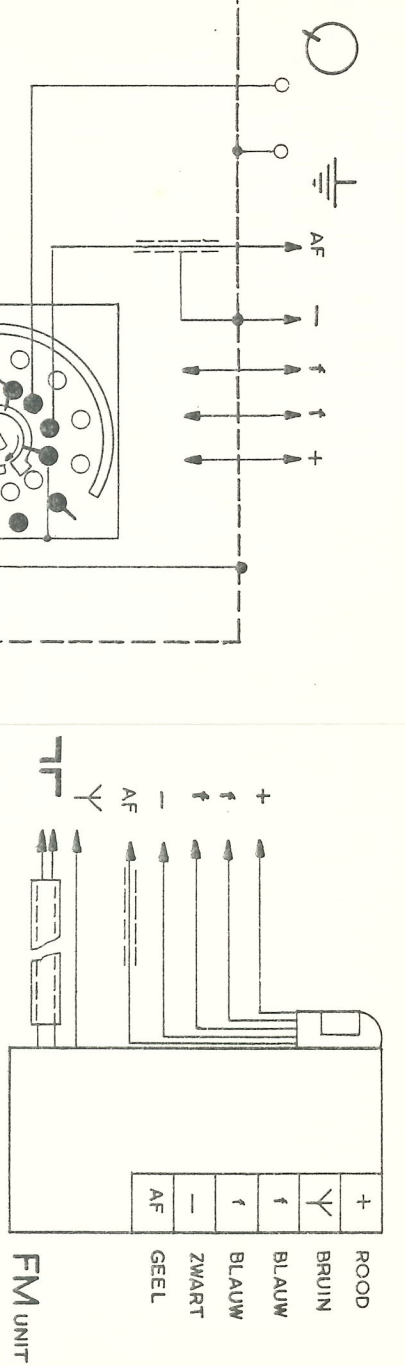
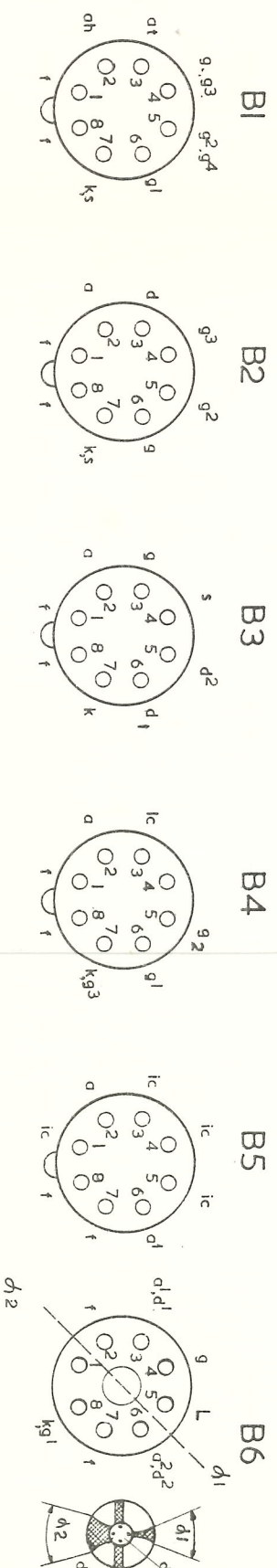
EM 34
 KY 516
 FM



GOLFLENGTE SCHAKELAAR 6 STANDEN: KG I, KG II, MG, LG, FM, GRAM.
GETEKEND IN STAND KG I

SPANNINGEN GEMETEN MET VOLTMETER 10 000 Ω/V
SPANNINGEN EN STROMEN ZONDER ANTENNESIGNAL

UITSLUITEND VOOR APP. 6191 EN HOGGER



C	42, 4, 5, 10,	6, 7, 8, 2, 9, 40,	39, 19, 21, 22, 3, 11, 19, 20,	12, 16, 13, 17, 14, 15, 18,	29, 30, 23, 24, 31, 49, 50,	32,	27, 26, 28, 51, 44, 38,	34, 35, 36,
S	71,	4, 5, 6, 61, 62, 63, 64, 65,	1, 2, 3,	24, 25, 26,	21, 22, 23,	31,	32,	41,
D		20,	2, 19,	3,	22,	8,	11,	23, 27, 26, 7, 9, 21, 4, 10, 1, 24, 25, 14, 15, 16, 18,
								5, 6,
								81,
								51, 52, 53, 54, 55,
								91,

AZ 41

KY516 FM